



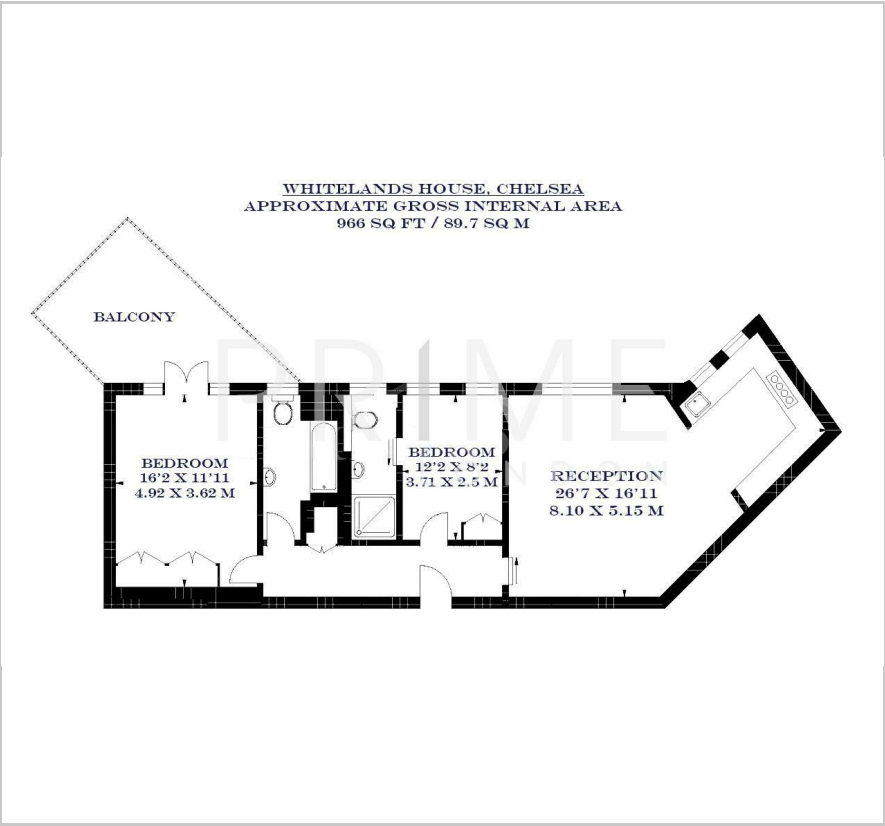
Whitelands House

Cheltenham Terrace, London, SW3 4QX

£1,350 Per Week



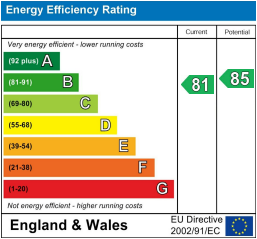
Floor Plan



Area Map



Energy Efficiency Graph



Viewing

By appointment. Contact us on 0207 052 1075 if you wish to arrange a viewing appointment for this property, or require further information.

- Two bedroom apartment in the heart of Chelsea
- Large west-facing roof terrace
- Located just off the iconic King's Road
- 966 square feet (89.7 square meters)
- Communal gardens
- A short walk away from Sloane Square station



This newly refurbished two-bedroom apartment, located just off the iconic King's Road and set within the sought-after Whitelands House, is available for lease through Prime London.

Spanning 966 square feet (89.7 square meters), this property features an expansive reception area, providing a versatile space for both living and dining. The open-plan design integrates the kitchen seamlessly into the reception room, offering a contemporary layout ideal for entertaining. The kitchen is well-equipped, featuring modern appliances and ample storage.

The property comprises two generous bedrooms, and the master bedroom is complemented by direct access to a large west-facing roof terrace, perfect for outdoor relaxation or al fresco dining. There is also an additional bedroom, and two well-designed bathrooms—a full bathroom with a bathtub and a separate shower room.

Whitelands House is a prestigious residential block located next to Duke of York's Square, providing easy access to the vibrant lifestyle of King's Road, renowned for its array of bars, cafes, restaurants, and boutique shops. The property is within walking distance to Sloane Square Underground Station (Circle & District Lines) and multiple bus routes, offering excellent transport links across London.



These particulars, whilst believed to be accurate are set out as a general outline only for guidance and do not constitute any part of an offer or contract. Intending purchasers should not rely on them as statements of representation of fact, but must satisfy themselves by inspection or otherwise as to their accuracy. No person in this firm's employment has the authority to make or give any representation or warranty in respect of the property.